

BCL2L13 Antibody (C-term)
Purified Rabbit Polyclonal Antibody (Pab)
Catalog # AP7878b**Specification**

BCL2L13 Antibody (C-term) - Product Information

Application	WB,E
Primary Accession	Q9B XK5
Reactivity	Human
Host	Rabbit
Clonality	Polyclonal
Isotype	Rabbit IgG
Calculated MW	52723
Antigen Region	342-369

BCL2L13 Antibody (C-term) - Additional Information**Gene ID** 23786**Other Names**

Bcl-2-like protein 13, Bcl2-L-13, Bcl-rambo, Protein Mil1, BCL2L13, MIL1

Target/Specificity

This BCL2L13 antibody is generated from rabbits immunized with a KLH conjugated synthetic peptide between 342-369 amino acids from the C-terminal region of human BCL2L13.

Dilution

WB~~1:1000

E~~Use at an assay dependent concentration.

Format

Purified polyclonal antibody supplied in PBS with 0.09% (W/V) sodium azide. This antibody is prepared by Saturated Ammonium Sulfate (SAS) precipitation followed by dialysis against PBS.

Storage

Maintain refrigerated at 2-8°C for up to 2 weeks. For long term storage store at -20°C in small aliquots to prevent freeze-thaw cycles.

Precautions

BCL2L13 Antibody (C-term) is for research use only and not for use in diagnostic or therapeutic procedures.

BCL2L13 Antibody (C-term) - Protein Information**Name** BCL2L13**Synonyms** MIL1

Function May promote the activation of caspase-3 and apoptosis.

Cellular Location

[Isoform 2]: Mitochondrion membrane; Single-pass membrane protein. Nucleus

Tissue Location

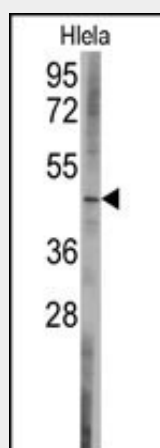
Ubiquitous, with the highest levels of expression in heart, placenta and pancreas

BCL2L13 Antibody (C-term) - Protocols

Provided below are standard protocols that you may find useful for product applications.

- [Western Blot](#)
- [Blocking Peptides](#)
- [Dot Blot](#)
- [Immunohistochemistry](#)
- [Immunofluorescence](#)
- [Immunoprecipitation](#)
- [Flow Cytometry](#)
- [Cell Culture](#)

BCL2L13 Antibody (C-term) - Images



Western blot analysis of anti-BCL2L13 Antibody (C-term) (Cat.#AP7878b) in HeLa cell line lysates (35ug/lane). BCL2L13 (arrow) was detected using the purified Pab.

BCL2L13 Antibody (C-term) - Background

BCL2L10 belongs to the BCL-2 protein family. BCL-2 family members form hetero- or homodimers and act as anti- or pro-apoptotic regulators that are involved in a wide variety of cellular activities. The protein may promote the activation of caspase-3 and apoptosis.

BCL2L13 Antibody (C-term) - References

Banga, S., Proc. Natl. Acad. Sci. U.S.A. 104 (12), 5121-5126 (2007)
Yi, P., FEBS Lett. 534 (1-3), 61-68 (2003)
Kataoka, T., J. Biol. Chem. 276 (22), 19548-19554 (2001)